

PROGRAM SPOTLIGHT

ANNA MARIE'S ALLIANCE

HOLDING HOPE

Tour presented by

Mindy Thomes, Holding Hope Manager

Jared Zacharias, Monitor

Kristi Markgraf, Monitor

Teagan Widman, Monitor

Sam Austin, Monitor



At a glance



Established in August 2022



St. Cloud, Minnesota

Serving primarily central Minnesota, as well as all of Minnesota

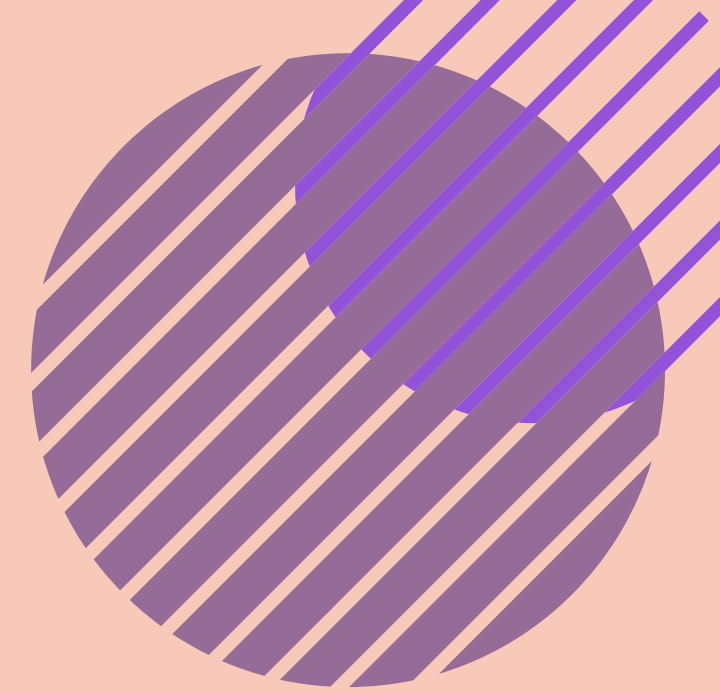


Community served

We serve a community made up of many different counties. One of the counties has a Domestic Violence Court, our main partner. We have other providers in the area, but none offer services specifically for families affected by domestic violence nor offer no cost to both parties.



Holding Hope Funding



OVW JFF funding synopsis

- 100% OVW JFF funded
- This is our first OVW JFF funding; we are incredibly thankful!
- Without this grant, Holding Hope wouldn't be open and operating in the capacity it is today.

Use of funding

- We are also funded to provide civil legal services with our award.

Holding Hope Services



Services provided

Supervised visitation and safe exchanges

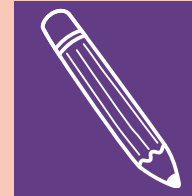


Hours

- Monday, Tuesday, Thursday, Friday
 - 8 am–6:30 pm
- Wednesday
 - 8 am–4:30 pm
- Sunday
 - 8:30 am–5 pm

We are closed on holidays.

Nights and Sundays are the busiest



About our services

We have been serving families for 13 months now, with 23 families served

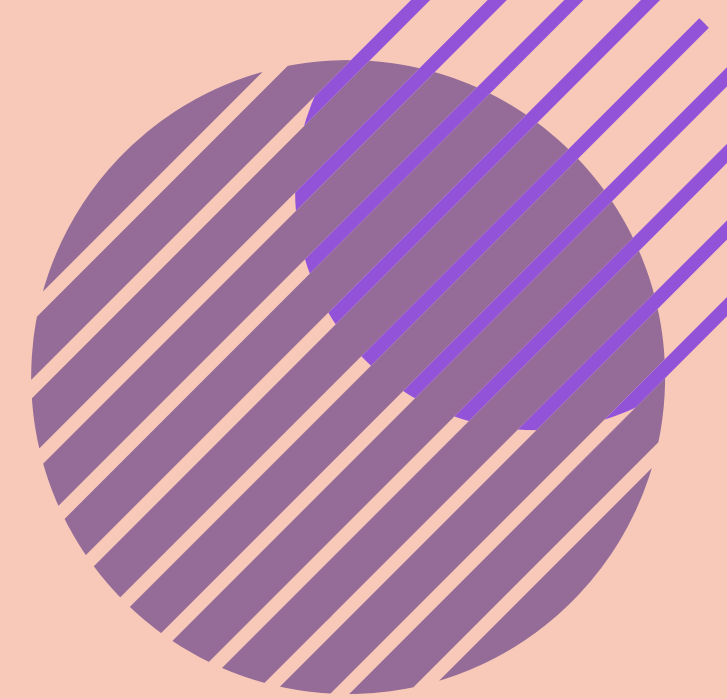
- Supervised visitation
 - 22 families served
 - Average of 8–10 visits per week
- Safe exchange
 - 2 families served
 - 2–3 exchanges per month (same-day exchanges)

Numbers vary greatly, depending on the court and whether the families are following their Domestic Violence Court or probation conditions. Judges will suspend visits if they need corrective action.



About Our Team

- Manger
 - 40 hours
- 4 part-time monitors
 - Hours vary based on visits/back-ups, cleaning, etc.
 - Jared (here since opening)
 - Kristi (since February)
 - Teagan (since June)
 - Sam (since June)
- On-site Stearns County deputies
 - Paid for by the county



Meeting the Diverse and Unique Needs of Our Families



We really strive to meet each family where they are.

We meet with the parents individually to find out how we can help them have successful visits, and then we make an individual plan for the family.

Community Partnerships



- We have a Stearns County Domestic Violence Partnership that meets monthly.
 - Includes Domestic Violence Judges, County/City Prosecutors Office, Sheriffs Office, Child & Family Services, County Jail, Child/Adult Mental Health, Mid MN Legal Aid, Domestic Violence Programming, Law Enforcement, Community Corrections, Anna Marie's Alliance, and Court Admin.
- The visitation program was a dream that this partnership has talked about for years. This is a place for referrals, advice, support, and collaboration.
- We also got a lot of our furnishings provided by our criminal forfeiture fund.
- We have used our relationship with the deputies to rebuild the relationship our clients sometimes have with law enforcement.

Holding Hope Physical Space

Check-ins and -outs

- One lobby/waiting room
 - If a client is in the center, the door connecting the lobby and the main visitation rooms is closed, and an alarm is on.
 - We have a large motor room that is off the main lobby that is used strategically during visit times to ensure there is no one in the lobby.
- For visiting parents, check-ins take place in the visitation room
- For children, check-ins take place in the lobby after the custodial parent has left
 - Check-outs take place either just outside the visitation room or in the lobby if the custodial parent hasn't arrived yet

Rooms

- Main lobby/waiting room
- 4 private visitation rooms
 - 2 large family rooms
 - 1 infant/toddler room
 - 1 small family/teen room
- 2 offices
 - One for manager, one shared for monitors
- Small kitchen
 - With storage space, fridge & freezer, sink
- Storage room
 - Toys to rotate, games, carts with crafts/gaming to be brought into visits, bedding for Child and Family Services

Holding Hope Safety

Building safety

- County Deputy on staff
- Monitor in the room with the family at all times
 - Plus backup monitor at the center
- Staff carry walkie-talkies to communicate needs during visits
 - For example, bathroom breaks, needing a snack, etc.
- Code words are used to signal if a visit needs to be watched closer on the monitors
 - Videos do not have sound
- When a client is at the center, staff wear panic buttons
 - Door alarm button
 - Notifies if someone opens the lobby or emergency exit
 - Panic button
 - For emergencies
 - Will page campus deputies, Stearns County deputies, and St. Cloud police department to the center
- Emergency exit on opposite side of building from main door



Thank you for being part of this tour Holding Hope Supervised Visitation Center of Anna Marie's Alliance!

Learn more about us at
<https://annamarie.org/holding-hope-supervised-visitation-center/>



This project was supported by Grant No. 15JOVW-23-GK-05165-MUMU & Grant No. 15JOVW-21-GG-00217-JFFX awarded by the Office on Violence Against Women, U.S. Department of Justice. The opinions, findings, conclusions, and recommendations expressed are those of the authors and do not necessarily reflect the views of the Department of Justice, Office on Violence Against Women.

Inspire would love to hear your thoughts and input about this Program Spotlight Session 6. Please follow this QR code to our post-event evaluation.

