

PROGRAM SPOTLIGHT

SAFE ALLIANCE

PLANET SAFE

Presented by

MariElena Herrera, Manger

Stephanie Rodriguez, Lead Family Guide

At a Glance



Established in 2013



Austin, Texas

Serving Central Texas, but can provide services to anyone in the state



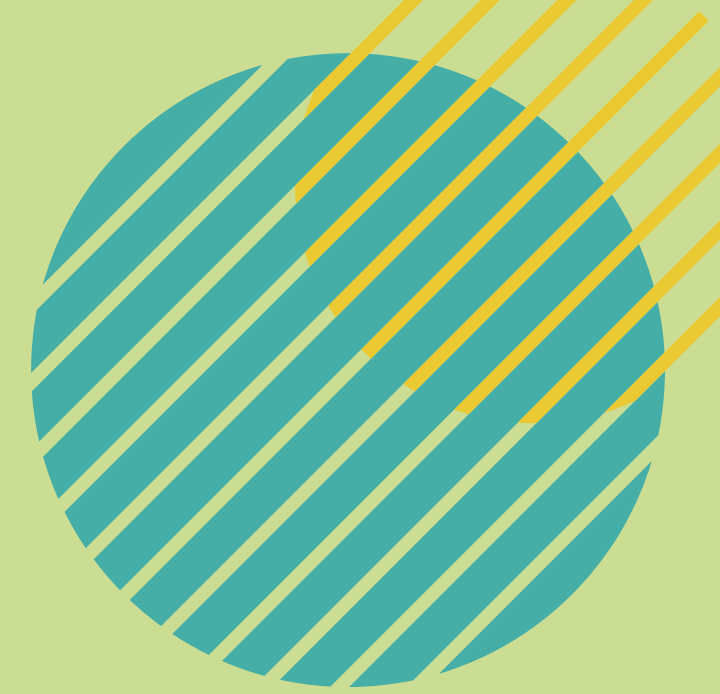
Community served

As an organization, the SAFE Alliance works with survivors of IPV, sexual assault, and child abuse. We at Planet SAFE work with those who have used violence and survivors of IPV. Most of our clients also have some type of court order or are referred to Planet SAFE.

SAFE | stop abuse for everyone

Supervised Visitation & Exchange

Planet SAFE Funding



OVW JFF funding synopsis

- Planet SAFE has been utilizing OVW JFF funding since the program was founded in 2013.
- Our program celebrated our 10th Anniversary this year!

Use of funding

- We also have a Legal Services Program that is funded through OVW, but that is not a service that Planet SAFE itself provides

Other funding sources

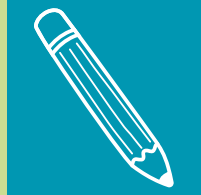
- Planet SAFE is 100% supported by OVW JFF funds

Planet SAFE Services



Services provided

Supervised visitation and safe exchanges



About our services

- Currently providing services to 23 families
- Supervised visitation
 - 13 families
 - 2-hour visits on a set day and time
 - Two schedules in order to expand number of families receiving services:
 - 1/3/5 schedule: families have visits on the 1st, 3rd, and 5th set day of the month
 - 2/4 schedule: families have visits on the 2nd and 4th set day of the month
- Safe exchange
 - 10 families
 - Eight families are weekend long exchanges, and the other two are same-day exchanges
 - Services on 1/3/5 or 2/4 schedule

Planet SAFE Program Overview



Hours

20 hours/week

- Monday and Friday
 - 4–8pm
- Saturday
 - 10am–4pm
- Sunday
 - 2–8pm



About our team

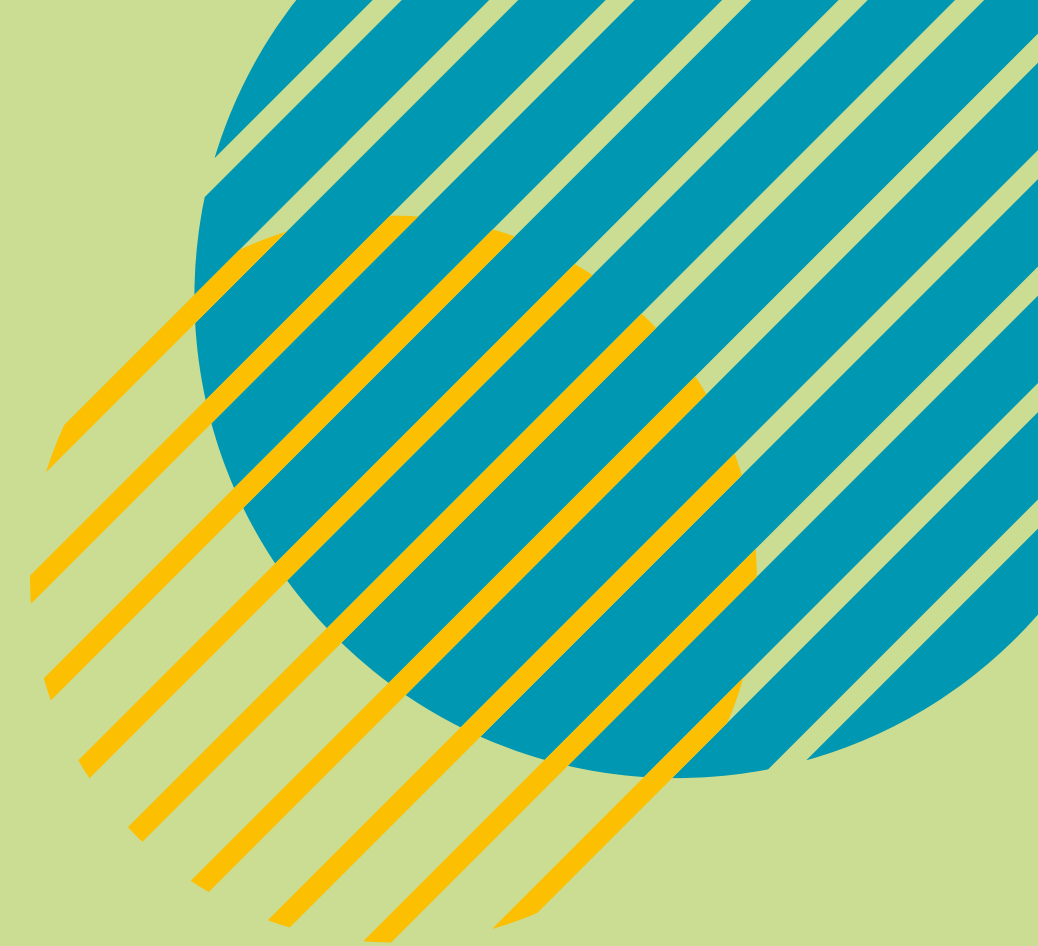
- Manager and Lead Family Guide
 - Both supervisory roles
 - 40 hours/week
 - Direct service and admin work
- 3 Family Guides
 - 2 are bilingual
 - Each work 20 hours/week
 - Direct service work
- 9 PRN/Relief Guides
 - On-call staff who do the same direct service work as family guides but only come in when needed.
- 2 volunteers
 - Currently being trained to assist with front desk work and exchanges



Meeting the Diverse and Unique Needs of our Families

We do our very best to utilize trauma-informed care in all aspects of service delivery. We attend/provide training regularly and do our best to familiarize ourselves with the families we're working with.

Even though we all have a set number of families that we're working with, we all introduce ourselves to any parent or child in the building and get to know them the best we can.





Community Partnerships

Planet SAFE has had a consulting committee since the program began in 2013. In 2022, we began including Inspire in our consulting committee.

Other members include:

- Travis County judges and attorneys
- UT School of Law Domestic Violence Clinic
- Austin PD Victim Services
- Office of the Travis County Pct. Constable
- Higher level staff from The SAFE Alliance (for example, the COO)
- Travis County Family Support Services
- Many more

Our partners play a tremendous role in our service delivery. Everyone on our consulting committee has expertise in an area that is important/affects the day-to-day operations at Planet SAFE. They help us work through difficult cases and help us consider all sides of problems. They've gone so far as to help us decide to implement new policies. We meet with our consulting committee once every quarter, and the meetings are truly vital to the success of our program.

Planet SAFE Physical Space

Building overview

- Occupies a building in downtown Austin that used to be a home
- Steel doors leading into building
- Two lobbies separated by heavy door opened with access card or deadbolt key

Security

- All visitors are buzzed through the door through our intercom at the front desk
- All visitors are hand-wanded with metal detector when they come into the building

Custodial parent side

- Separate lobby
- Entrance to front office
- Staff offices

Visiting parent side

- Separate lobby
- Visiting rooms
- Kitchen
- Constable/security office



Thank you for being part of this tour of The SAFE Alliance's Planet SAFE Supervised Visitation & Exchange Program!

Learn more about us at

<https://www.safeaustin.org/our-services/face-to-face-support/supervised-visitation/>

This project was supported by Grant No. 15JOVW-21-GK-02241-MUMU & Grant No. 15JOVW-22-GG-00239-JFFX awarded by the Office on Violence Against Women, U.S. Department of Justice. The opinions, findings, conclusions, and recommendations expressed are those of the authors and do not necessarily reflect the views of the Department of Justice, Office on Violence Against Women.



SAFE | stop abuse for
everyone

Supervised Visitation & Exchange